

# AGOM HIGHWAY EXPANSION JOINTS

agflexj series - distributed by aag



## HIGHWAY EXPANSION JOINTS—AGFLEXJ



Agom AGFLEXJ expansion joints are designed to handle displacements of up to 330 mm between the bridge decks they are fastened to. Entirely waterproof, they are secured to the structure with suitable anchor bolts. The deformable rubber elements are vulcanised bonded with tough steel reinforcements (standard EN 10025). AGFLEXJ joints also allow displacement and rotation of the structure's parts relative to each other in any direction.

### Advantages of AGFLEXJ expansion joints

#### Corrosion Resistance

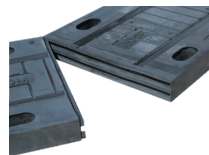
The steel structure is completely covered in rubber so protecting it from corrosion.

#### Low Noise

Thanks to the special design of the rubber cover, the joint produces little noise as vehicles pass over it.

#### Ease of Assembly

AGFLEXJ joints are extremely easy to fit; the two metre length of each element makes for easier installation compared to other shorter expansion



joints. The joint's elements are connected together with a male-female coupling and secured to the structure with suitable anchor bolts.

#### Waterproof

AGFLEXJ joints are entirely waterproof. An additional waterproof strip fixed under the mats collect any exhaust water preventing any leakage. Furthermore, two draining pipes, at both sides of the mat capture water coming from sidewalls.



#### Long Service Life

The tough steel reinforcement and special anti-abrasive rubber used to manufacture Agom joints has been designed to withstand the impact of heavy traffic, the action of oil, grease and petrol, and the effects of ageing due to constant exposure to sunlight and temperature changes.



#### Comprehensive Labelling

All elastomeric bearings are provided with a non-fading mark directly moulded on the rubber outlining

- the properties of the joint.
- international standard.
- order number.
- date of manufacturing



#### Kerb units

Special Kerb Units totally hot vulcanised in the factory, can be provided in order to joint the bridge decks along the sidewalls

#### Interchangeable

The AGFLEXJ is a particularly suitable choice for replacing existing joints

#### Guarantee

Agom expansion joint AGFLEXJ" are warranted against any defects due to the manufacturing process and raw materials.

The warranty cover the products supplied by Agom and expires if the products are incorrectly store, handle, installed and maintain.

For the correct installation, please refer to the Agom Expansion Joints installation instructions.

#### Quality

Agom expansion joints are designed and manufactured in accordance with the requirements of the new European standard. Agom can also supply expansion joints complying with other standards. Every single component is moulded and assembled by fully qualified and trained workers at the Agom factory with regular external inspections according to EN 1337 and under strict ISO 9001:2015 quality control standards.



SISTEMA DI GESTIONE QUALITÀ CERTIFICATO

CERTIQUALITY È MEMBRO DELLA FEDERAZIONE CISQ

# AGOM HIGHWAY EXPANSION JOINTS

agflexj series - distributed by aag



## Materials

All the expansion joints are manufactured using only high-quality materials:

### Elastomer material

The elastomer used in the moulding process can be polychloroprene (neoprene), natural rubber or SBR rubber depending on the specifications requested. Agom can manufacture also expansion joints with dielectric rubber

### Ferrous material :

The internal vulcanised rolled steel reinforcements are in accordance with EN 10025 standard

Characteristics	Test method	Requirements
Tensile strength (MPa)	ISO 37 type 2	≥ 15,5
Elongation at break (%)	ISO 37 type 2	≥ 450
Compression Set 22 h; 70 °C	ISO 815	≤ 30
Hardness (IRHD)	ISO 48	60 ± 5

## Installation instructions

We recommended the following installation for our expansion joints:

- Cutting of paving, demolition and cleaning of the slab.
- Installation of drainage pipe and casting of levelling epoxy resin.
- After a thorough finishing, where required laying of waterproof membrane.
- Laying of the expansion joints.
- Drilling and installation of chemical anchor bolts.
- Locking with dynamometric key, transition strips pouring and finishing.

## Dimensions

Model	Movement [mm]	Dimensions AxHxL [mm]	Pitch [mm]	Weight [kg/m]
AGFLEXJ 30	± 15	269 X 32 X 2000	200	17
AGFLEXJ 50	± 25	272 X 42 X 2000	200	24
AGFLEXJ 80	± 40	357 X 46 X 2000	250	32
AGFLEXJ 100	± 50	388 X 55 X 2000	250	37
AGFLEXJ 120	± 60	428 X 69 X 1000	250	58
AGFLEXJ 140	± 70	462 X 78 X 2000	250	78
AGFLEXJ 160	± 80	498 X 84 X 2000	250	87
AGFLEXJ 200	± 100	800 X 71 X 2000	250	147
AGFLEXJ 250	± 125	880 X 78 X 2000	250	170
AGFLEXJ 330	± 165	1100 X 100 X 1000	250	280

## Anchors: technical data sheet

Model	ANCHOR	HOLE	DEPTH
	M x B	D Ø	T
AGFLEXJ 30	M12 x 200	14	180
AGFLEXJ 50	M12 x 200	14	180
AGFLEXJ 80	M14 x 200	16	180
AGFLEXJ 100	M16 x 200	18	180
AGFLEXJ 120	M16 x 200	18	180
AGFLEXJ 140	M16 x 200	18	180
AGFLEXJ 160	M16 x 200	18	180
AGFLEXJ 200	M20 x 230	24	200
AGFLEXJ 250	M20 x 230	24	200
AGFLEXJ 330	M24 x 300	30	250

